

PRIME DAILY

November 21, 2025



AI Bubble Concerns Trigger Tech Selloff, Resilience of Indian Equities Under Test.

The S&P 500 fell 1.56% Thursday, surrendering early gains as Nvidia's rally faded amid concerns over stretched AI valuations and diminishing prospects for a December rate cut. The Nasdaq 100 dropped 2.38%.

Despite beating earnings estimates and surging 5% pre-market, Nvidia reversed course to close down 3.2%. Doubts about AI spending sustainability and heavy tech concentration triggered aggressive afternoon selling.

The semiconductor selloff rippled across the sector: AMD fell nearly 8%, Micron dropped 11%, and the PHLX Semiconductor Index declined almost 5%.

Walmart provided a rare bright spot, rising 6.5% after raising guidance on strong e-commerce and advertising growth. The retailer reported better-than-expected Q3 results and noted less tariff impact than previously anticipated.

Bitcoin tumbled by more than 5% to \$86,724, hitting a seven-month low. Massive outflows from spot Bitcoin ETFs and retail panic intensified the decline.

September jobs data showed stronger-than-expected hiring but downward revisions to August and rising unemployment, suggesting labour market weakness. The mixed signals, combined with recent Fed commentary on persistent inflation concerns, reinforce expectations that December rate cuts remain unlikely.

Crude oil fell 1% to \$58.38 on supply uncertainty and geopolitical tensions. Gold held flat near \$4,080 as risk-off sentiment offset reduced rate-cut expectations.

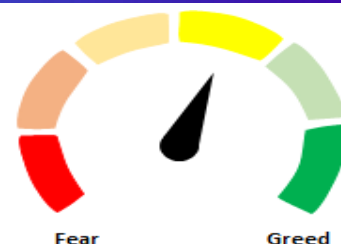
Asian markets extended the global selloff on Friday, with investors dumping risk assets despite Nvidia's strong earnings, as U.S. jobs data failed to clarify the rate outlook.

Nifty continued its upward momentum for the second consecutive day, gaining 139 points to close at 26,192 yesterday.

Nifty remains in a strong uptrend, holding above key moving averages. The prior swing high near 26,100 is likely to act as near-term support, while the all-time high at 26,277 poses immediate resistance.

Indian markets are poised to open marginally lower amid weak global cues.

The resilience of Indian equities will be tested as investors watch whether key indices can find support at near-term levels despite global headwinds.



Global Equity Indices

| | Close | Abs. Change | % Change |
|------------------|--------|-------------|----------|
| Indian Indices | | | |
| Sensex | 85,633 | 446.2 ▲ | 0.52% |
| Nifty | 26,192 | 139.5 ▲ | 0.54% |
| Midcap | 60,964 | 14.5 ▲ | 0.02% |
| Small cap | 18,067 | -8.7 ▼ | -0.05% |
| US Indices | | | |
| Dow Jones | 45,752 | -386.5 ▼ | -0.84% |
| S&P 500 | 6,539 | -103.4 ▼ | -1.56% |
| Nasdaq | 22,078 | -486.2 ▼ | -2.15% |
| European Indices | | | |
| FTSE | 9,528 | 20.2 ▲ | 0.21% |
| DAX | 23,279 | 115.9 ▲ | 0.50% |
| CAC | 7,981 | 27.3 ▲ | 0.34% |
| Asian Indices | | | |
| Shanghai | 3,931 | -15.7 ▼ | -0.40% |
| Hang Seng | 25,836 | 4.9 ▲ | 0.02% |
| Nikkei | 48,386 | -151.7 ▼ | -0.31% |

Indices Futures

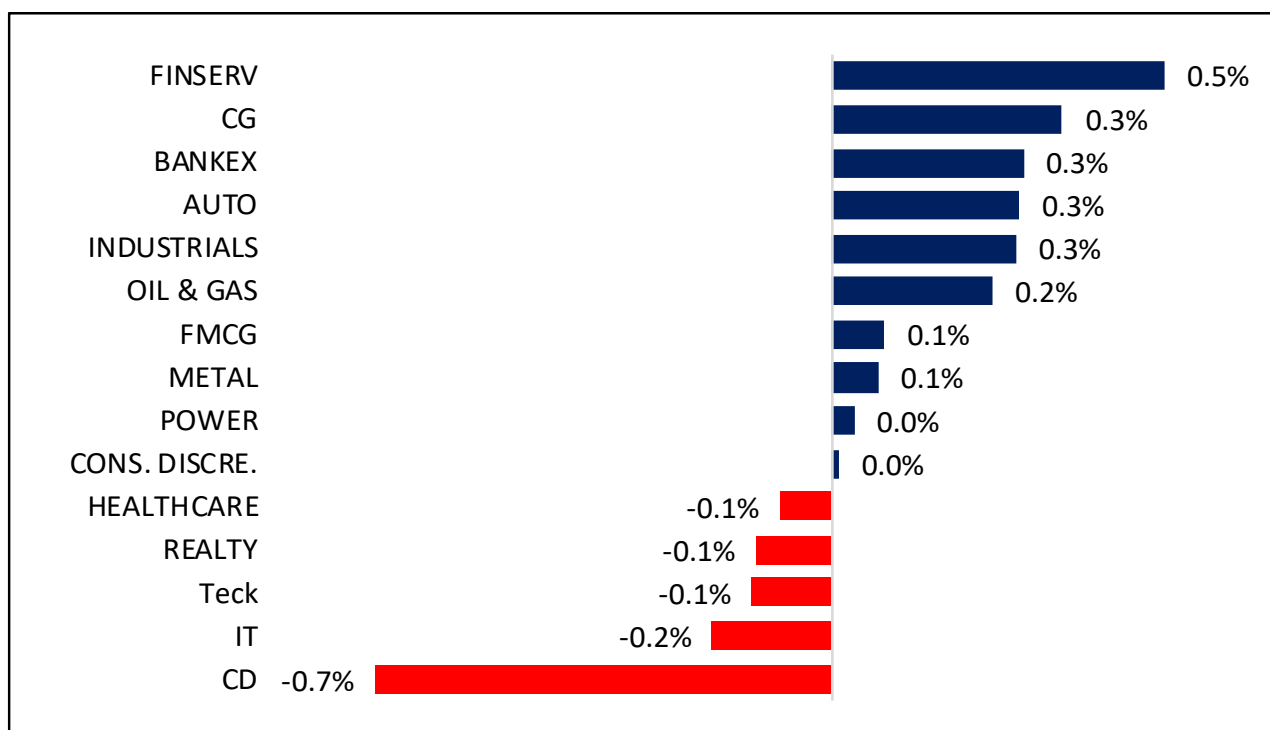
| | Close | Abs. Change | % Change |
|------------------|--------|-------------|----------|
| IFSC Nifty | | | |
| IFSC Nifty | 26,185 | 31.0 ▲ | 0.12% |
| US Indices | | | |
| Dow Jones | 46,040 | 215.0 ▲ | 0.47% |
| S&P 500 | 6,584 | 26.5 ▲ | 0.40% |
| Nasdaq | 24,197 | 65.5 ▲ | 0.27% |
| European Indices | | | |
| FTSE | 9,484 | 17.4 ▲ | 0.18% |
| DAX | 23,046 | -311.0 ▼ | -1.33% |
| Asian Indices | | | |
| Shanghai | 4,457 | -91.6 ▼ | -2.00% |
| Hang Seng | 25,232 | -229.0 ▼ | -0.90% |
| Nikkei | 48,758 | 297.5 ▲ | 0.61% |

Nifty50 Index Contributors

| Top Five (Positive Contributors) | | |
|----------------------------------|--------|----------|
| Stock | Points | % Change |
| HDFCBANK | 47.7 | 0.18 |
| RELIANCE | 44.8 | 0.17 |
| BAJFINANCE | 13.4 | 0.05 |
| AXISBANK | 9.3 | 0.04 |
| EICHERMOT | 6.9 | 0.03 |

| Bottom Five (Negative Contributors) | | |
|-------------------------------------|--------|----------|
| Stock | Points | % Change |
| HCLTECH | -4.0 | -0.02 |
| INFY | -3.6 | -0.01 |
| ASIANPAINT | -3.4 | -0.01 |
| TITAN | -2.8 | -0.01 |
| HINDUNILVR | -2.6 | -0.01 |

BSE Sectoral Leaders & Laggards

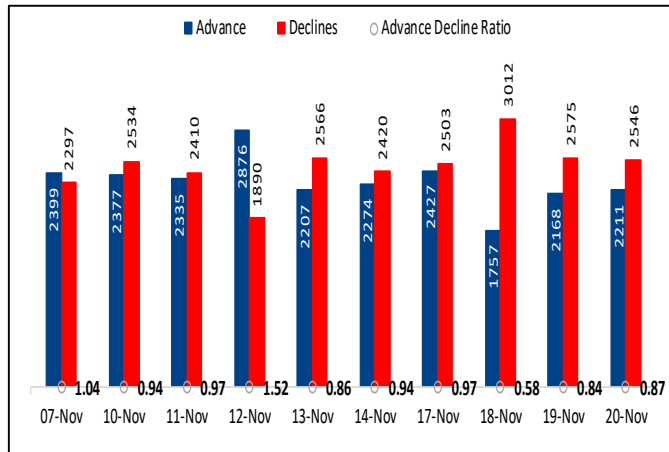


Nifty50 Index Top Pops & Drops

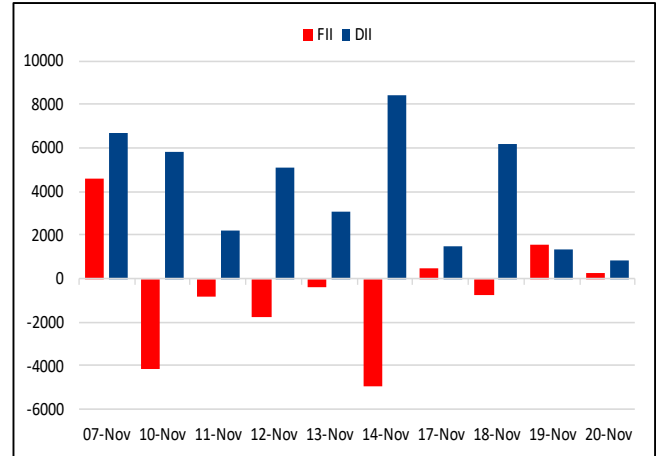
| Nifty50 Top Five Gainers | | | |
|--------------------------|--------|----------|------------|
| Symbol | LTP | % Change | Volume |
| EICHERMOT | 7125.5 | 3.32 | 857,232 |
| BAJFINANCE | 1028.6 | 2.29 | 5,459,073 |
| BAJAJFINSV | 2095.6 | 2.21 | 1,576,354 |
| RELIANCE | 1549.1 | 1.99 | 18,171,724 |
| TECHM | 1456.0 | 1.54 | 2,818,268 |

| Nifty50 Top Five Losers | | | |
|-------------------------|--------|----------|-----------|
| Symbol | LTP | % Change | Volume |
| ASIANPAINT | 2859.8 | -1.17 | 1,062,883 |
| HCLTECH | 1645.4 | -1.03 | 2,724,035 |
| TITAN | 3902.4 | -0.78 | 762,391 |
| HINDUNILVR | 2428.4 | -0.54 | 1,396,929 |
| APOLLOHOSP | 7423.0 | -0.48 | 228,411 |

BSE Advance & Declines



Institutional Activities



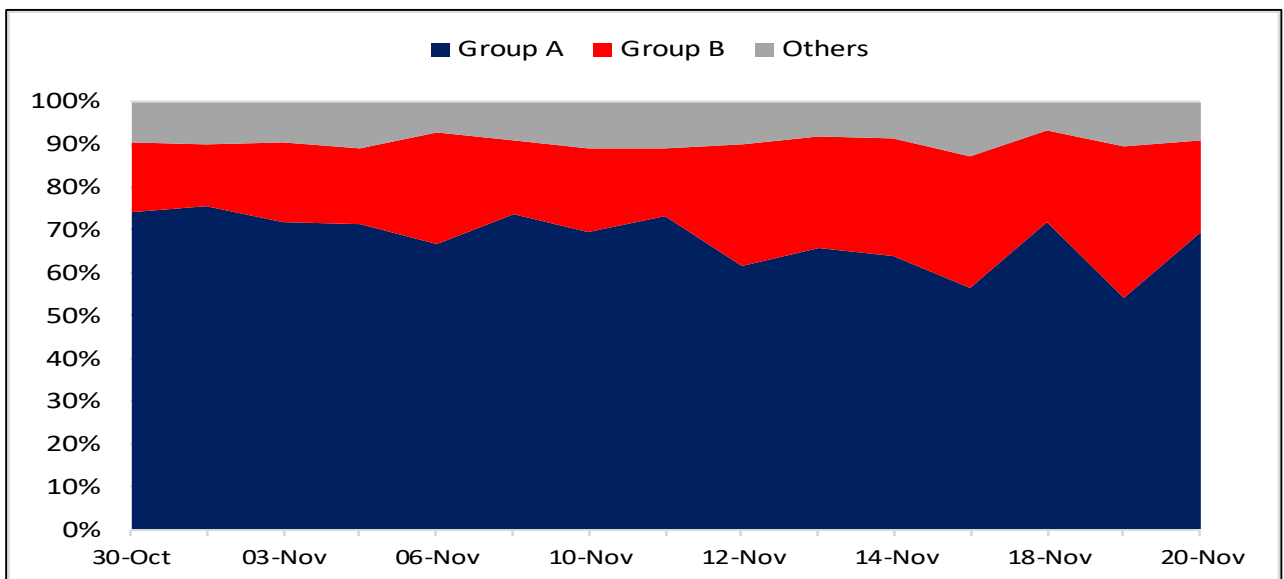
52 Week High Stocks

| | 20-Nov-25 | 19-Nov-25 |
|---|-----------|--------------|
| BSE Universe | 175 | 155 |
| BSE Group A Stocks Hitting 52 Week High | | |
| Stocks | Price | 52 Week High |
| AIAENG | 3838.9 | 3850.0 |
| BANKBARODA | 288.3 | 295.0 |
| BHARATFORG | 1434.9 | 1460.7 |
| BHARTIARTL | 2159.5 | 2169.0 |
| CANBK | 147.9 | 151.8 |




52 Week Low Stocks

| | 20-Nov-25 | 19-Nov-25 |
|--|-----------|-------------|
| BSE Universe | 199 | 219 |
| BSE Group A Stocks Hitting 52 Week Low | | |
| Stocks | Price | 52 Week Low |
| CHEMPLASTS | 318.55 | 315 |
| DELTACORP | 70.41 | 70.07 |
| DISHTV | 4.26 | 4.23 |
| EASEMYTRIP | 7.52 | 7.5 |
| ELECTCAST | 76.91 | 76.66 |

BSE Cash Market Turnover Participant-wise



News Highly Sensitive to Stock Price

| Impact | Stock | News |
|---|------------------------------------|---|
|  | Zaggle Prepaid | Zaggle Prepaid Ocean Services Limited (Zaggle), has entered into an agreement with BIBA Fashion Limited. Zaggle would provide Zaggle Zoyer Platform to BIBA Fashion Limited. It is for a period of 36 months. |
|  | Sun Pharma Advanced (SPARC) | Sun Pharma Advanced Research Company Ltd. announced Complete Response Letter (CRL) resubmission to the US Food and Drug Administration (FDA) by Ocuvox Therapeutics Inc. (Ocuvox) for the PDP-716 New Drug Application (NDA). The PDP-716 Complete Response resubmission addresses the FDA CRL issued in July 2023, stating unresolved facility inspection-related conditions at a third-party Active Pharmaceutical Ingredient (API) manufacturing facility. The FDA did not raise any concerns related to the efficacy or safety of PDP-716. PDP-716 is a novel, once daily, ophthalmic suspension of brimonidine tartrate 0.35%. |
|  | Godrej Properties | Godrej Properties Limited announced that it has surpassed its business development annual guidance of Rs 20,000 crore for FY26 with the acquisition of a ~75-acre land parcel in Nagpur. This is the third acquisition in the city over the past four years, underscoring its strong momentum and strategic focus on emerging growth corridors. The development on this land will comprise primarily plotted residential units and will offer an estimated saleable area of ~1.7 million square feet. The project will have an estimated revenue potential of ~Rs 755 crore. |

| Stock | News |
|----------------------------|---|
| Steel Sector | In order to streamline the regulatory framework governing steel imports and to facilitate ease of doing business, the Ministry of Steel has undertaken a review of the existing import-related requirements. Based on the recommendations of the High-Level Committee on Non-Financial Regulatory Reforms (HLC-NFRR), it has been decided that steel grades not covered by any Quality Control Order will no longer require clarification or NOC from the Ministry of Steel. |
| Goodluck | Goodluck Defence and Aerospace Limited, a subsidiary of the Company, has received an export order valued at US\$ 6 million for the supply of 155mm M107 Ready-to-Fill Shells. |
| Man Industries | Man Industries (India) has entered into a Memorandum of Understanding (MoU) with the Aramco Asia India, to explore the long-term supply of product range of Man Industries (India) or any of its subsidiaries and for business potential of setting up a manufacturing facility in Saudi Arabia. |
| Transrail Lighting | Transrail Lighting has bagged new orders totaling Rs 548 crore, including a major International Transmission Line EPC project in new Country in MENA region. With these additions, the company's cumulative order inflows for FY26 have risen to more than Rs 4,285 crore. |
| TCS | Tata Consultancy Services (TCS) has partnered with private equity firm TPG to establish a multi-billion dollar joint venture, HyperVault AI Data Centre Ltd. This collaboration aims to build large-scale AI and Sovereign Data Centers in India, with TCS and TPG investing significantly to meet the growing AI demand and bolster TCS's position as a leading AI-led technology services firm. TCS' HyperVault will be funded through a mix of equity from TCS and TPG, along with debt. Both partners combined will commit to investing up to Rs 18,000 crore over the next few years. Out of the total commitment, TPG will invest up to Rs 8,820 crore and is expected to have a final shareholding between 27.5% and 49% in HyperVault. |
| Reliance Industries | Reliance Industries has ceased importing Russian oil for its export-only refinery from November 20. Exports from this facility will exclusively use non-Russian oil starting December 1. This move aligns with Government of India guidelines. Reliance, a major buyer of Russian crude, is recalibrating its imports. The company operates the world's largest refining complex in Jamnagar. |

| Stock | News |
|--------------------------|---|
| JSW Energy | The resolution plan submitted by the Company for RCRIPL (Raigarh Champa Rail Infrastructure Private Limited) under the corporate insolvency resolution process has been approved by the Committee of Creditors and the Company has received a Letter of Intent from the Resolution Professional. RCRIPL is the sole provider of rail infrastructure for coal transportation services to KMPCL, which owns 1,800 MW operational and another 1,800 MW under construction thermal power plant located in Chhattisgarh. |
| AWL Agri Business | Promoter Adani Commodities LLP is likely to sell up to a 7% stake in AWL Agri via block deals, with an offer size of Rs 2,501 crore and a floor price of Rs 275 per share. |
| HG Infra | Company announced that it has secured an order worth Rs 274.11 crore from DLF Cyber City Developers for executing infrastructure (access road network) works at the DLF Downtown Phase-2 project in Sector 25A, Gurugram, Haryana. The project, valued at Rs 274.11 crore, is to be completed within 548 days. |

Key Events

Japan manufacturing PMI picks up in Nov but still in contraction; services strong

Japanese manufacturing activity picked up in November but still remained in contraction territory, while services were strong, preliminary purchasing managers index data showed.

The S&P Global manufacturing PMI rose to 48.8 in November from 48.2 in the prior month. A reading below 50 indicates contraction, with the sentiment-based print signaling that Japanese manufacturers still remained largely negative over their prospects.

But manufacturing PMI still contracted at its slowest pace in three months, pointing to some improvement.

UK consumers brace for budget, GfK survey shows

British consumer confidence edged down in November but remained in its narrow range of the past six months, a survey showed, in contrast to other data that has shown more weakness ahead of finance minister Rachel Reeves' budget next week.

The GfK consumer confidence barometer, Britain's longest-running survey of household sentiment, dropped to -19 from -17, slightly below the -18 forecast in a Reuters poll of economists.

Japan CPI inflation edges up in Oct as expected, BOJ rate hike in focus

Japan consumer price index inflation increased in October as expected, with a slight increase in underlying inflation potentially giving the Bank of Japan more impetus to hike interest rates.

National core CPI inflation, which excludes volatile fresh food prices, rose to 3% year-on-year in October from 2.9% in the prior month, as expected, government data showed.

A rapidly weakening yen, which hit its weakest level in 10 months on Thursday, also pushed up import costs, which factored into higher inflation.

Existing Home Sales Beat Expectations, Signaling Strength in U.S. Housing Market

Existing Home Sales, a key indicator of the overall economic strength of the U.S., exceeded expectations in the latest report. The annualized number of existing residential buildings that were sold during the previous month reached 4.10 million, according to the data released.

This actual figure of 4.10 million surpassed the forecast of 4.08 million, indicating a bullish trend for the USD. The higher than expected reading is seen as a positive sign for the housing market, which is considered a central pillar of the U.S. economy.

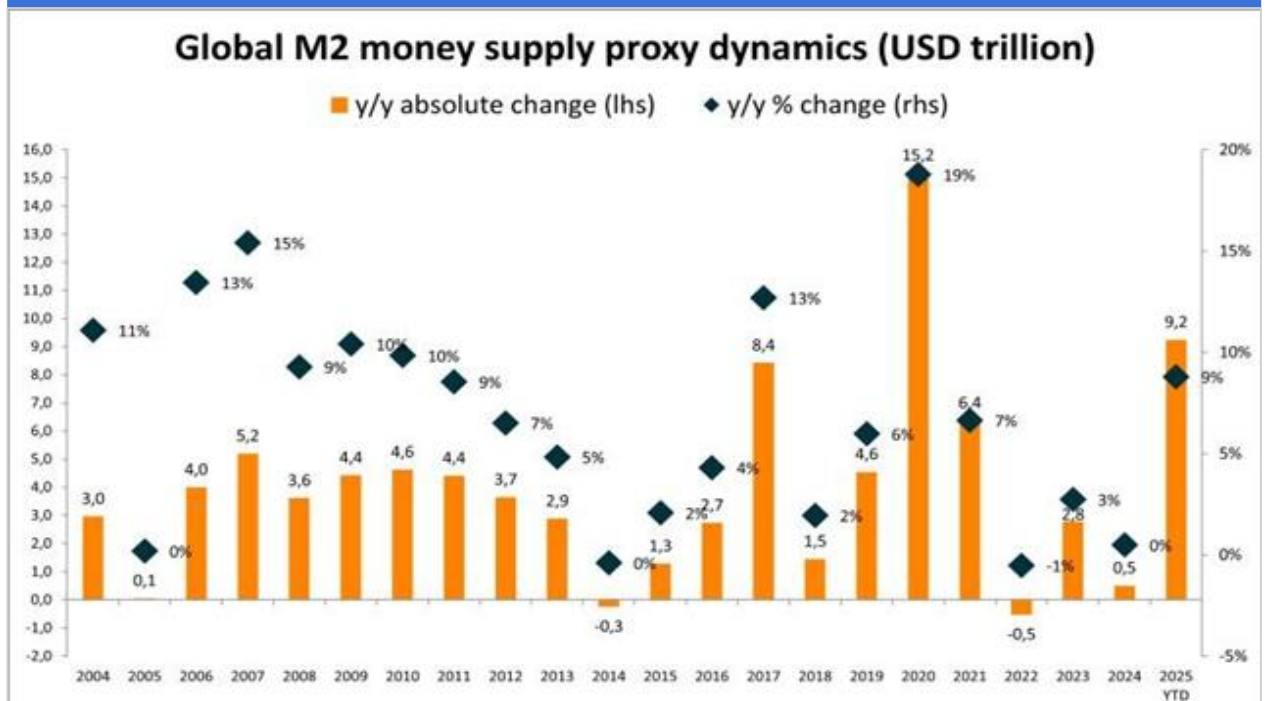
In comparison to the previous month's data, the actual number also showed an increase. Previous data recorded a figure of 4.05 million, meaning that the current data represents a growth rate of approximately 1.23%. This increase in Existing Home Sales reflects the ongoing strength and resilience of the U.S. housing market.

Chart with Interesting Observations

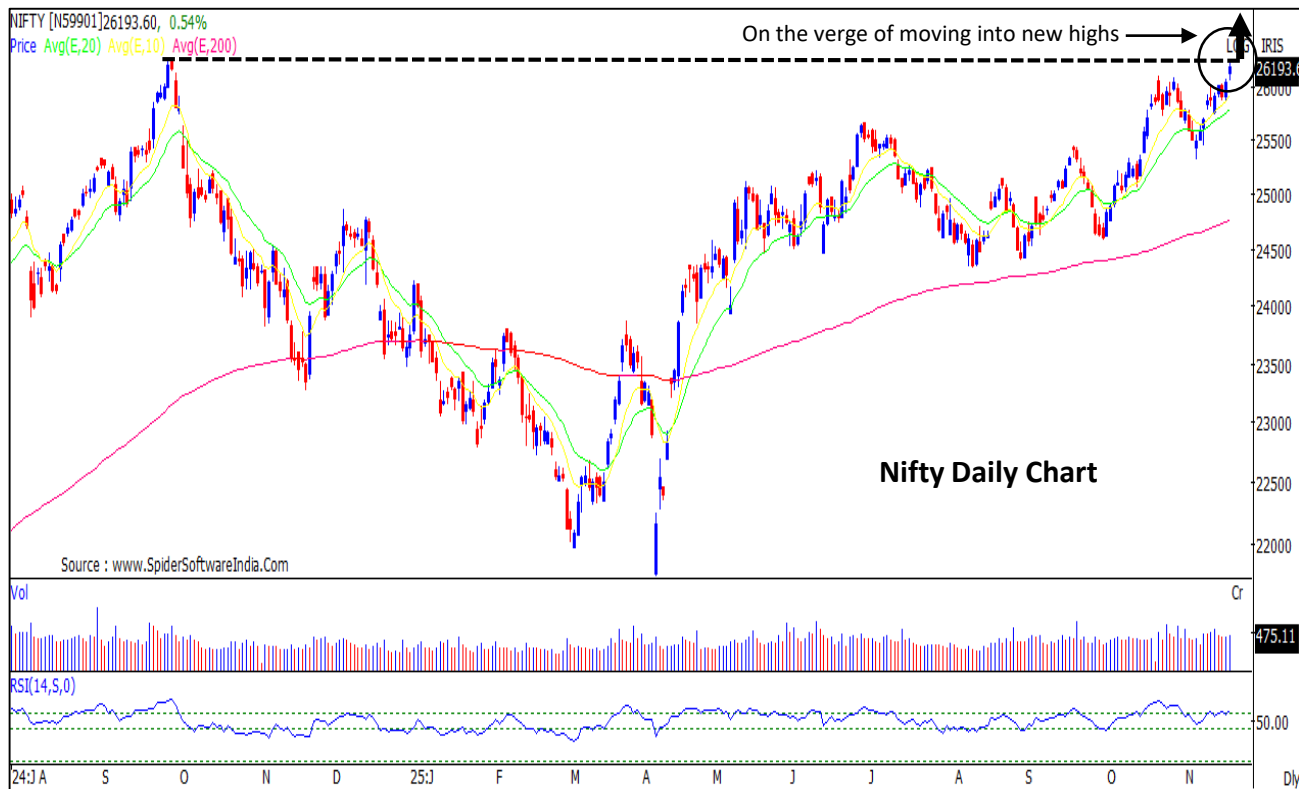
Global M2 Money Supply: 2025 Year-to-Date YoY Growth Overview

- As of November 20, 2025, the estimated global M2 money supply stands at 95,581 billion dollars, expressed in U.S. dollars using current exchange rates. The latest month with complete data for the United States, Euro Zone, China, and Japan is September 2025, during which dollar-denominated global M2 increased 1.12% over the prior three months and 9% YoY, a movement consistent with normal historical conditions on three three-month basis, but it shows the biggest jump since the pandemic. In local currency terms, M2 grew 1.23% in the U.S., 0.49% in the Euro Zone, 1.53% in China, and 0.21% in Japan, with each of these increases falling near or below their historical averages.
- M2 is often a lagging economic indicator; inflation and asset prices typically react to money supply changes with a lag, sometimes up to 12-18 months.

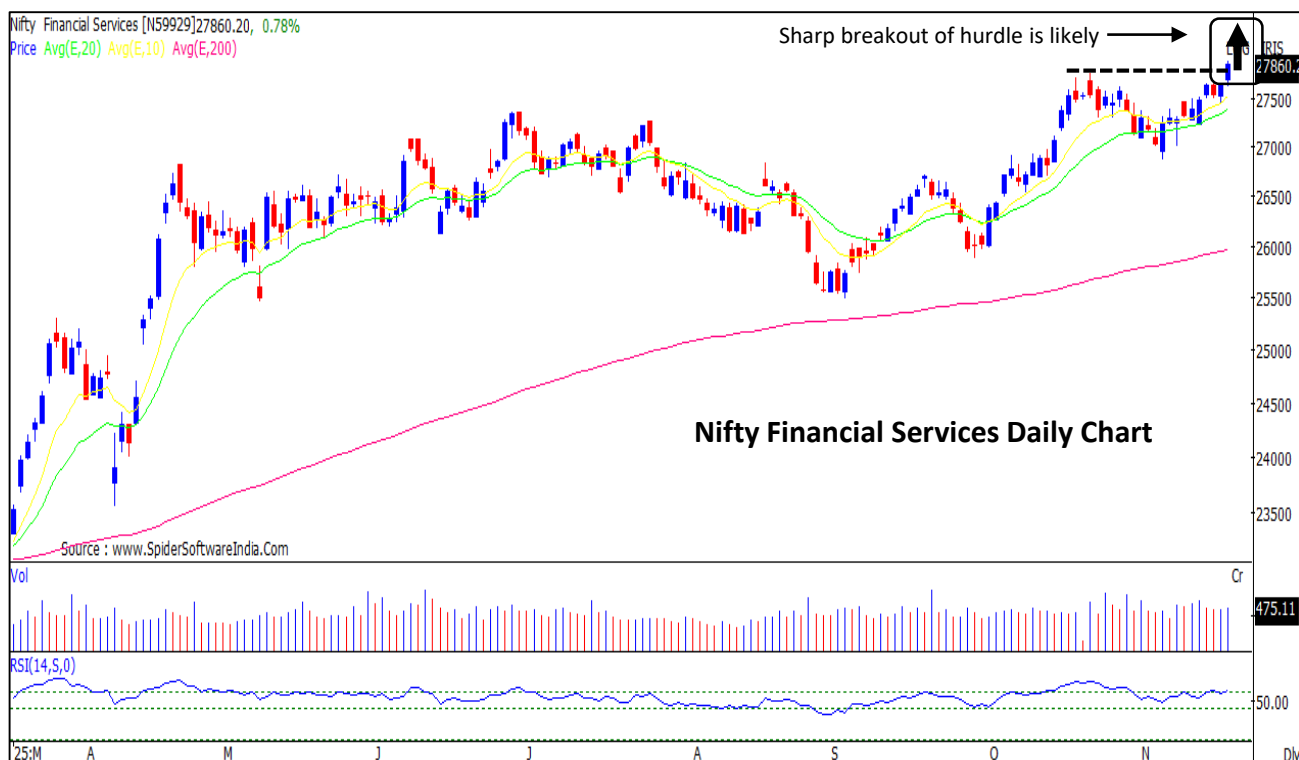
Global M2 Money Supply Absolute Change and YoY % change



Nifty : The market is placed to move into new all time highs. The overall chart pattern indicates sharp upside ahead.



Nifty Financial Services : Formation of bullish pattern like higher tops and bottoms. More upside towards new all time highs is expected.



F&O Highlights

LONG BUILD UP WAS SEEN IN THE NIFTY & BANK NIFTY FUTURES

Create longs with the SL of 26050 levels.

- Nifty continued its upward momentum for the second consecutive day, gaining 139 points to close at 26,192. After an initial dip, the index steadily climbed throughout the session, although some profit booking was seen in the final hour.
- Long Build-Up was seen in the Nifty Futures where Open Interest rose by 0.66% with Nifty rising by 0.54%.
- Long Build-Up was seen in the Bank Nifty Futures where Open Interest rose by 3.85% with Bank Nifty rising by 0.22%.
- Nifty Open Interest Put Call ratio rose to 1.43 levels from 1.28 levels.
- Amongst the Nifty options (25-Nov Expiry), Call writing is seen at 26300-26400 levels, indicating Nifty is likely to find strong resistance in the vicinity of 26300-26400 levels. On the lower side, an immediate support is placed in the vicinity of 26000-26100 levels where we have seen Put writing.
- Short covering was seen by FII's' in the Index Futures segment where they net bought worth 405 cr with their Open Interest going down by 1954 contracts.

| Index | Expected Trend | Prev. Close | Buy/Sell | Stop Loss | Target |
|----------------|----------------|-------------|-------------------------|--------------|--------------|
| NIFTY FUT | UP | 26220.80 | BUY AROUND 26150 | 26050 | 26300 |
| BANK NIFTY FUT | UP | 59399.00 | BUY AROUND 59100 | 58850 | 59650 |

| Nifty 50 Snapshot | | | |
|---------------------|-----------|-----------|--------|
| | 20-Nov-25 | 19-Nov-25 | % Chg. |
| Nifty Spot | 26192.15 | 26052.65 | 0.54 |
| Nifty Futures | 26220.80 | 26071.00 | 0.57 |
| Premium/ (Discount) | 28.65 | 18.35 | N.A. |
| Open Interest (OI) | 1.98 | 1.97 | 0.66 |
| Nifty PCR | 1.43 | 1.28 | 12.29 |

| Bank Nifty Snapshot | | | |
|---------------------|-----------|-----------|--------|
| | 20-Nov-25 | 19-Nov-25 | % Chg. |
| Bank Nifty Spot | 59347.70 | 59216.05 | 0.22 |
| Bank Nifty Futures | 59399.00 | 59227.40 | 0.29 |
| Premium/ (Discount) | 51.30 | 11.35 | N.A. |
| Open Interest (OI) | 0.22 | 0.21 | 3.85 |
| Bank Nifty PCR | 1.25 | 1.23 | 2.02 |

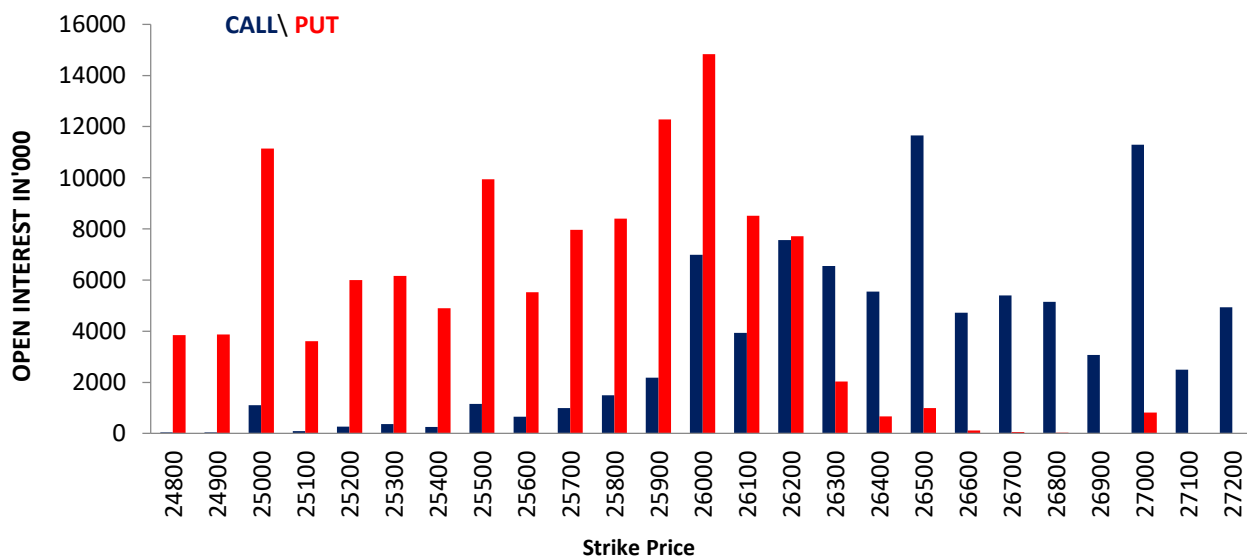
| Nifty Options Highest OI (Monthly) | | | |
|------------------------------------|---------------------------|--------------|---------------------------|
| CALL | | PUT | |
| Strike Price | Open Interest (Contracts) | Strike Price | Open Interest (Contracts) |
| 26500 | 155424 | 26000 | 197832 |

FII Activity on 20 Nov 2025

| | BUY | | SELL | | NET | OPEN INTEREST | |
|------------------------|----------------|----------------|----------------|----------------|--------------|----------------|---------------|
| | Contracts | Value (Rs Cr) | Contracts | Value (Rs Cr) | (Rs Cr) | Contracts | Value (Rs Cr) |
| Index Futures | 28922 | 5735 | 26916 | 5331 | 405 | 219923 | 43714 |
| Nifty Futures | 18462 | 3625 | 16469 | 3232 | 393 | 154940 | 30463 |
| Bank Nifty Fut. | 5192 | 1075 | 3746 | 778 | 297 | 46663 | 9675 |
| Index Options | 5604102 | 1093923 | 5539540 | 1081682 | 12241 | 2151712 | 425368 |
| Nifty Options | 5107871 | 993287 | 5037148 | 979789 | 13498 | 1757198 | 344694 |
| Bank Nifty Opt. | 376947 | 77831 | 381961 | 78843 | -1013 | 321463 | 66582 |
| Stock Futures | 2073480 | 140518 | 2066154 | 139853 | 666 | 5918708 | 401966 |
| Stock Options | 730235 | 53744 | 718455 | 52898 | 847 | 515276 | 35517 |

FII's Open Interest (Contracts)

| Date | Index Futures | Nifty Futures | Bank Nifty Futures | Index Options | Nifty Options | Bank Nifty Options | Stock Futures | Stock Options |
|------------------------|---------------|---------------|--------------------|----------------|---------------|--------------------|----------------|---------------|
| 20-Nov-25 | 219923 | 154940 | 46663 | 2151712 | 1757198 | 321463 | 5918708 | 515276 |
| 19-Nov-25 | 221877 | 157891 | 44313 | 1911900 | 1524155 | 304895 | 6019400 | 548430 |
| NET (CONTRACTS) | -1954 | -2951 | 2350 | 239812 | 233043 | 16568 | -100692 | -33154 |

Nifty Monthly (25 – Nov) Option Open Interest Distribution


| Top Gainers OI Wise | | |
|---------------------|---------------|-----------|
| Company | Future OI (%) | Price (%) |
| BPCL | 15.11 | -0.16 |
| POWERINDIA | 5.92 | 3.57 |
| GODREJCP | 5.04 | -1.11 |
| LICHSGFIN | 4.95 | -1.56 |
| NUVAMA | 4.49 | -0.11 |

| Top Losers OI Wise | | |
|--------------------|---------------|-----------|
| Company | Future OI (%) | Price (%) |
| ASHOKLEY | -18.55 | 0.54 |
| RVNL | -18.30 | -0.33 |
| TATAELXSI | -14.09 | 0.36 |
| CHOLAFIN | -13.96 | 1.50 |
| SBICARD | -11.87 | 1.20 |

| Top Gainers Price Wise | | |
|------------------------|---------------|-----------|
| Company | Future OI (%) | Price (%) |
| IEX | -9.98 | 4.39 |
| POWERINDIA | 5.92 | 3.57 |
| EICHERMOT | 0.32 | 3.32 |
| CUMMINSIND | -2.62 | 2.68 |
| NBCC | -0.66 | 2.61 |

| Top Losers Price Wise | | |
|-----------------------|---------------|-----------|
| Company | Future OI (%) | Price (%) |
| IDEA | -2.51 | -4.86 |
| BIOCON | 3.18 | -3.65 |
| IIFL | -4.65 | -2.30 |
| DELHIVERY | -1.10 | -2.29 |
| AUROPARMA | -1.23 | -2.27 |

| Long Buildup | | |
|--------------|---------------|-----------|
| Company | Future OI (%) | Price (%) |
| POWERINDIA | 5.92 | 3.57 |
| PAYTM | 4.20 | 0.10 |
| SBILIFE | 4.09 | 1.11 |
| TECHM | 3.78 | 1.54 |
| MFSL | 3.04 | 1.47 |

| Short Buildup | | |
|---------------|---------------|-----------|
| Company | Future OI (%) | Price (%) |
| BPCL | 15.11 | -0.16 |
| GODREJCP | 5.04 | -1.11 |
| LICHSGFIN | 4.95 | -1.56 |
| NUVAMA | 4.49 | -0.11 |
| POLYCAB | 4.45 | -0.51 |

| Long Unwinding | | |
|----------------|---------------|-----------|
| Company | Future OI (%) | Price (%) |
| RVNL | -18.30 | -0.33 |
| TMPV | -11.85 | -0.29 |
| AMBER | -11.48 | -2.08 |
| BLUESTARCO | -10.51 | -0.02 |
| OBEROIRLTY | -10.23 | -0.01 |

| Short Covering | | |
|----------------|---------------|-----------|
| Company | Future OI (%) | Price (%) |
| ASHOKLEY | -18.55 | 0.54 |
| TATAELXSI | -14.09 | 0.36 |
| CHOLAFIN | -13.96 | 1.50 |
| ABB | -13.40 | 1.26 |
| SBICARD | -11.87 | 1.20 |

Securities In Ban For Trade – 21.11.2025

| No. | Company Name |
|-----|--------------|
| 1. | SAIL |
| 2. | SAMMAANCAP |

Economic Calendar

| Friday | Monday | Tuesday | Wednesday | Thursday |
|---|--|---|--|---|
| 21 Nov | 24 Nov | 25 Nov | 26 Nov | 27 Nov |
| Japan, India, EU, UK, US: Flash PMI Japan: Natl CPI Us: Kansas City Fed Service Activity | US: Dallas & Chicago Fed Mfg. Activity | US: FHFA HPI, Richmond Fed, Pending Home Sales | Japan: Machine Tool US: MBA Mortgage, Initial & Conti. Jobless, Advance Goods Trade, Retail Inventory, GDP, Core PCE, Durable Goods Order, Personal Income & Spending, New Home Sales, Building Permits | US: Fed Beige Book China: Industrial Profit EU: Consumer Confidence |

Open Derivatives Trading Calls

| NO | RECO DT | RECO | COMPANY NAME | BUY RANGE | CMP | SL | TARGET | UPSIDE % | VALID TILL |
|----|-----------|------|-----------------------|------------|---------|------|--------|----------|------------|
| 1 | 12-NOV-25 | BUY | ADANI PORT DEC FUT | 1505-1467 | 1,502.0 | 1452 | 1625 | 8.2 | 24-DEC-25 |
| 2 | 12-NOV-25 | BUY | TCS NOV FUT | 3129-3051 | 3,148.0 | 3025 | 3285 | 4.4 | 26-NOV-25 |
| 3 | 18-NOV-25 | SELL | HINDALCO NOV FUT | 794.34-805 | 800.9 | 815 | 763 | 4.7 | 2-DEC-25 |
| 4 | 20-NOV-25 | BUY | EICHER MOTORS DEC FUT | 7109-6930 | 7,171.0 | 6860 | 7460 | 4.0 | 4-DEC-25 |

Open Short-Term MTF Calls

| NO. | RECO DT. | RECO | COMPANY NAME | BUY RANGE | CMP | Lower Band | SL | TARGET | UPSIDE % | VALID TILL |
|-----|-----------|------|-----------------|---------------|---------|------------|---------|---------|----------|------------|
| 1 | 7-NOV-25 | BUY | M&M | 3701-3720 | 3,716.7 | 3,626.0 | 3,564.0 | 3,904.0 | 5.0 | 28-NOV-25 |
| 2 | 7-NOV-25 | BUY | UNION BANK | 154-153.25 | 153.2 | 149.0 | 146.0 | 162.0 | 5.8 | 28-NOV-25 |
| 3 | 12-NOV-25 | BUY | AEGIS LOGISTICS | 814-808.35 | 777.6 | 785.0 | 769.0 | 865.0 | 11.2 | 26-NOV-25 |
| 4 | 12-NOV-25 | BUY | MASTEK | 2248-2273 | 2,285.8 | 2,194.0 | 2,149.0 | 2,395.0 | 4.8 | 26-NOV-25 |
| 5 | 13-NOV-25 | BUY | SHARDA CORP | 790-783.80 | 773.4 | 761.0 | 746.0 | 838.0 | 8.4 | 27-NOV-25 |
| 6 | 14-NOV-25 | BUY | BEL | 425.50-426.50 | 423.0 | 414.0 | 408.0 | 447.0 | 5.7 | 5-DEC-25 |
| 7 | 17-NOV-25 | BUY | BITES | 250.50-251.50 | 247.6 | 242.0 | 238.0 | 268.3 | 8.3 | 1-DEC-25 |
| 8 | 19-NOV-25 | BUY | INTELLECT | 1136-1140 | 1,097.5 | 1,097.0 | 1,080.0 | 1,205.0 | 9.8 | 3-DEC-25 |
| 9 | 19-NOV-25 | BUY | SONA COMS | 505-508 | 507.7 | 494.0 | 485.0 | 535.0 | 5.4 | 10-DEC-25 |

Open Positional MTF Calls

| NO. | RECO DT. | RECO | COMPANY NAME | BUY RANGE | CMP | SL | TARGET 1 | TARGET 2 | UPSIDE % | VALID TILL |
|-----|-----------|------|-----------------------|-------------|---------|--------|----------|----------|----------|------------|
| 1 | 3-OCT-25 | BUY | NELCO | 896-887.45 | 851.8 | 820.0 | 978.0 | 1060 | 24 | 2-DEC-25 |
| 2 | 13-OCT-25 | BUY | MOTILAL OSWAL FINANCE | 1003-1023 | 952.4 | 914.0 | 1105.0 | 1145 | 20 | 27-NOV-25 |
| 3 | 16-OCT-25 | BUY | ADANI PORTS | 1481-1497 | 1,491.1 | 1386.0 | 1600.0 | 1645 | 10 | 30-NOV-25 |
| 4 | 16-OCT-25 | BUY | TATA POWER | 399.50-403 | 388.1 | 380.0 | 424.0 | 441 | 14 | 30-NOV-25 |
| 5 | 20-OCT-25 | BUY | CENTRAL BANK | 39.50-38.95 | 38.6 | 35.9 | 43.0 | 47 | 22 | 19-DEC-25 |
| 6 | 10-NOV-25 | BUY | UJJIVAN SMALL FINANCE | 52.50-51.98 | 54.0 | 48.0 | 57.0 | 61 | 13 | 9-JAN-26 |
| 7 | 10-NOV-25 | BUY | ITBEEES | 39.22-39.42 | 40.6 | 37.6 | 41.0 | 43 | 5 | 9-JAN-26 |
| 8 | 17-NOV-25 | BUY | TATA COMM | 1905-1893 | 1,917.4 | 1780.0 | 2025.0 | 2150 | 12 | 1-JAN-26 |
| 9 | 17-NOV-25 | BUY | ZAGGLE PREPAID | 403-408 | 385.0 | 370.0 | 444.0 | 463 | 20 | 16-JAN-26 |
| 10 | 19-NOV-25 | BUY | IDBI | 104-105.50 | 102.8 | 95.5 | 114.0 | 119 | 16 | 18-JAN-26 |
| 11 | 20-NOV-25 | BUY | BANKBEEES | 95.69-96.70 | 94.9 | 91.5 | 100.5 | 104 | 9 | 18-FEB-26 |

*= 1st Target Achieved

NSE 200 SUPPORT & RESISTANCE

| SYMBOL | CLOSE | PIVOT | SUPT 2 | SUPT 1 | RESI 1 | RESI 2 | 52 W H | 52 W L | 30 D % CHG | 365 D % CHG |
|------------|---------|---------|---------|---------|---------|---------|---------|---------|---------------|----------------|
| 360ONE | 1142.1 | 1134.9 | 1107.6 | 1124.8 | 1152.1 | 1162.2 | 1318.0 | 790.5 | -3.48 | 7.19 |
| ABB | 5147.0 | 5134.0 | 5045.0 | 5096.0 | 5185.0 | 5223.0 | 7960.0 | 4684.5 | -1.62 | -23.20 |
| ABCAPITAL | 327.9 | 329.3 | 323.5 | 325.7 | 331.5 | 335.1 | 345.4 | 149.0 | 7.37 | 77.45 |
| ACC | 1851.4 | 1853.0 | 1830.5 | 1840.9 | 1863.4 | 1875.5 | 2314.9 | 1778.5 | 1.12 | -15.29 |
| ADANIENSOL | 993.6 | 998.9 | 973.9 | 983.7 | 1008.7 | 1023.9 | 1050.0 | 588.0 | 6.03 | 14.00 |
| ADANIENT | 2446.1 | 2455.1 | 2416.6 | 2431.4 | 2469.9 | 2493.6 | 2810.5 | 1966.0 | -4.00 | -13.30 |
| ADANIGREEN | 1060.0 | 1067.5 | 1039.0 | 1049.5 | 1078.0 | 1096.0 | 1467.0 | 758.0 | 2.50 | -24.97 |
| ADANIPORTS | 1491.1 | 1494.6 | 1477.2 | 1484.1 | 1501.5 | 1512.0 | 1523.6 | 995.7 | 1.64 | 15.62 |
| ADANIPOWER | 151.5 | 152.0 | 149.6 | 150.5 | 152.9 | 154.4 | 182.7 | 86.4 | -11.06 | -71.10 |
| ALKEM | 5700.0 | 5707.7 | 5630.7 | 5665.3 | 5742.3 | 5784.7 | 5868.0 | 4491.7 | 2.57 | 3.08 |
| AMBUJACEM | 555.8 | 557.6 | 550.6 | 553.2 | 560.2 | 564.6 | 625.0 | 453.1 | -1.72 | 1.13 |
| APLAPOLLO | 1721.2 | 1727.1 | 1695.0 | 1708.1 | 1740.2 | 1759.2 | 1936.0 | 1272.7 | -1.60 | 17.34 |
| APOLLOHOSP | 7423.0 | 7443.0 | 7367.0 | 7395.0 | 7471.0 | 7519.0 | 8099.5 | 6001.0 | -7.33 | 11.01 |
| ASHOKLEY | 146.2 | 146.0 | 144.0 | 145.1 | 147.1 | 148.0 | 152.9 | 95.9 | 7.66 | -33.93 |
| ASIANPAINT | 2859.8 | 2872.8 | 2819.2 | 2839.5 | 2893.1 | 2926.4 | 2926.9 | 2124.8 | 13.66 | 15.14 |
| ASTRAL | 1462.4 | 1458.7 | 1442.9 | 1452.7 | 1468.5 | 1474.5 | 1867.0 | 1232.3 | 0.98 | -15.43 |
| ATGL | 609.1 | 612.1 | 596.6 | 602.8 | 618.3 | 627.6 | 862.0 | 532.6 | -1.88 | -9.33 |
| AUBANK | 919.3 | 921.5 | 908.8 | 914.0 | 926.8 | 934.3 | 929.9 | 478.4 | 6.25 | 55.55 |
| AUROPHARMA | 1207.7 | 1217.1 | 1181.2 | 1194.4 | 1230.3 | 1253.0 | 1356.2 | 1010.0 | 9.85 | -3.39 |
| AXISBANK | 1285.2 | 1278.4 | 1253.7 | 1269.4 | 1294.1 | 1303.1 | 1287.3 | 933.5 | 4.83 | 13.34 |
| BAJAJ-AUTO | 8979.5 | 8958.2 | 8843.2 | 8911.3 | 9026.3 | 9073.2 | 9698.6 | 7089.4 | -1.59 | -5.93 |
| BAJAJFINSV | 2095.6 | 2081.2 | 2019.1 | 2057.3 | 2119.4 | 2143.3 | 2195.0 | 1551.7 | -2.07 | 31.27 |
| BAJAJHFL | 106.4 | 106.6 | 105.4 | 105.9 | 107.1 | 107.8 | 147.7 | 103.1 | -2.42 | -16.55 |
| BAJAJHLDNG | 11747.0 | 11741.0 | 11599.0 | 11673.0 | 11815.0 | 11883.0 | 14763.0 | 10120.1 | -6.81 | 11.29 |
| BAJFINANCE | 1028.6 | 1022.5 | 998.1 | 1013.4 | 1037.8 | 1046.9 | 1102.5 | 645.1 | -4.85 | -84.40 |
| BANKBARODA | 288.3 | 290.3 | 283.1 | 285.7 | 292.9 | 297.6 | 295.0 | 190.7 | 6.19 | 21.52 |
| BANKINDIA | 147.7 | 148.1 | 146.0 | 146.9 | 148.9 | 150.1 | 150.1 | 90.1 | 13.83 | 41.26 |
| BDL | 1557.0 | 1560.0 | 1517.1 | 1537.1 | 1580.0 | 1602.9 | 2096.6 | 907.0 | 1.46 | 61.11 |
| BEL | 423.0 | 424.1 | 419.1 | 421.1 | 426.1 | 429.1 | 436.0 | 240.3 | 1.56 | 51.61 |
| BHARATFORG | 1435.4 | 1442.8 | 1415.5 | 1425.5 | 1452.8 | 1470.1 | 1460.2 | 919.1 | 15.04 | 8.47 |
| BHARTIARTL | 2158.3 | 2159.2 | 2139.8 | 2149.0 | 2168.4 | 2178.6 | 2169.3 | 1511.0 | 5.21 | 41.48 |
| BHARTIHEXA | 1836.1 | 1837.0 | 1792.0 | 1814.1 | 1859.1 | 1882.0 | 2052.9 | 1234.0 | 1.84 | 31.54 |
| BHEL | 285.3 | 286.8 | 280.5 | 282.9 | 289.2 | 293.2 | 292.4 | 176.0 | 22.03 | 26.28 |
| BIOCON | 395.2 | 398.1 | 381.5 | 388.3 | 404.9 | 414.7 | 425.0 | 291.0 | 8.47 | 20.82 |
| BLUESTARCO | 1794.6 | 1793.9 | 1762.9 | 1778.7 | 1809.7 | 1824.9 | 2417.0 | 1521.0 | -8.96 | -1.04 |
| BOSCHLTD | 37050.0 | 37016.7 | 36626.7 | 36838.3 | 37228.3 | 37406.7 | 41945.0 | 25921.6 | -5.52 | 8.01 |
| BPCL | 365.1 | 365.7 | 360.2 | 362.6 | 368.1 | 371.2 | 381.6 | 234.0 | 8.10 | 26.97 |
| BRITANNIA | 5819.0 | 5827.5 | 5691.0 | 5755.0 | 5891.5 | 5964.0 | 6336.0 | 4506.0 | -4.14 | 18.93 |
| BSE | 2895.5 | 2914.3 | 2841.8 | 2868.7 | 2941.2 | 2986.8 | 3030.0 | 1227.3 | 16.09 | -38.75 |
| CANBK | 147.9 | 149.2 | 145.1 | 146.5 | 150.6 | 153.2 | 151.8 | 78.6 | 15.95 | 51.25 |
| CGPOWER | 721.3 | 722.0 | 713.7 | 717.5 | 725.8 | 730.3 | 811.4 | 517.7 | -2.55 | 0.41 |
| CHOLAFIN | 1703.2 | 1694.1 | 1655.3 | 1679.3 | 1718.1 | 1732.9 | 1782.0 | 1168.0 | 1.79 | 37.80 |
| CIPLA | 1529.2 | 1527.8 | 1512.4 | 1520.8 | 1536.2 | 1543.2 | 1673.0 | 1335.0 | -6.70 | 3.92 |
| COALINDIA | 379.7 | 379.5 | 375.8 | 377.7 | 381.4 | 383.2 | 427.5 | 349.3 | -2.80 | -7.91 |
| COCHINSHIP | 1724.7 | 1731.9 | 1660.9 | 1692.8 | 1763.8 | 1802.9 | 2545.0 | 1180.2 | -4.02 | 26.77 |
| COFORGE | 1846.1 | 1858.2 | 1810.7 | 1828.4 | 1875.9 | 1905.7 | 2005.4 | 1194.0 | 5.65 | -77.25 |
| COLPAL | 2179.7 | 2188.3 | 2153.6 | 2166.7 | 2201.4 | 2223.0 | 3115.0 | 2151.0 | -2.87 | -20.26 |
| CONCOR | 515.4 | 516.2 | 509.7 | 512.6 | 519.1 | 522.7 | 692.8 | 481.0 | -3.45 | -34.41 |
| COROMANDEL | 2264.4 | 2246.0 | 2176.3 | 2220.4 | 2290.1 | 2315.7 | 2718.9 | 1596.0 | 4.11 | 28.32 |
| CUMMINSIND | 4375.7 | 4349.5 | 4232.8 | 4304.2 | 4420.9 | 4466.2 | 4495.0 | 2580.0 | 9.22 | 32.55 |

NSE 200 SUPPORT & RESISTANCE

| SYMBOL | CLOSE | PIVOT | SUPT 2 | SUPT 1 | RESI 1 | RESI 2 | 52 W H | 52 W L | 30 D % CHG | 365 D % CHG |
|------------|---------|---------|---------|---------|---------|---------|---------|---------|---------------|----------------|
| DABUR | 525.1 | 522.9 | 512.6 | 518.8 | 529.1 | 533.2 | 577.0 | 433.3 | 4.06 | 3.32 |
| DIVISLAB | 6462.5 | 6464.3 | 6399.8 | 6431.2 | 6495.7 | 6528.8 | 7071.5 | 4955.0 | -2.14 | 9.52 |
| DIXON | 15313.0 | 15392.3 | 15056.3 | 15184.7 | 15520.7 | 15728.3 | 19148.9 | 12202.2 | -4.74 | 2.93 |
| DLF | 741.1 | 741.9 | 734.6 | 737.8 | 745.1 | 749.2 | 896.6 | 601.2 | -4.24 | -2.89 |
| DMART | 4085.0 | 4073.9 | 4011.3 | 4048.2 | 4110.8 | 4136.5 | 4949.5 | 3340.0 | -4.45 | 8.86 |
| DRREDDY | 1248.6 | 1247.1 | 1229.8 | 1239.2 | 1256.5 | 1264.4 | 1405.9 | 1020.0 | -2.61 | 2.90 |
| EICHERMOT | 7125.5 | 7050.0 | 6798.5 | 6962.0 | 7213.5 | 7301.5 | 7138.0 | 4646.0 | 1.60 | 43.50 |
| ENRIN | 3346.0 | 3349.7 | 3276.6 | 3311.3 | 3384.4 | 3422.8 | 3625.0 | 2508.8 | 7.91 | - |
| ETERNAL | 306.9 | 306.7 | 302.7 | 304.8 | 308.8 | 310.8 | 368.5 | 194.8 | -9.24 | - |
| EXIDEIND | 380.8 | 381.5 | 378.8 | 379.8 | 382.5 | 384.3 | 472.5 | 328.0 | -4.53 | -9.66 |
| FEDERALBNK | 244.9 | 245.2 | 242.2 | 243.6 | 246.6 | 248.3 | 248.5 | 172.7 | 7.86 | 18.52 |
| FORTIS | 935.4 | 932.3 | 912.8 | 924.1 | 943.6 | 951.8 | 1104.3 | 577.0 | -14.42 | 42.20 |
| GAIL | 184.3 | 184.2 | 182.0 | 183.2 | 185.3 | 186.3 | 213.4 | 150.5 | 3.30 | -1.27 |
| GLENMARK | 1878.0 | 1871.6 | 1818.9 | 1848.5 | 1901.2 | 1924.3 | 2284.8 | 1275.5 | 1.36 | 25.82 |
| GMRAIRPORT | 103.3 | 103.4 | 101.6 | 102.4 | 104.3 | 105.3 | 104.9 | 67.8 | 12.30 | - |
| GODFRYPHP | 2941.4 | 2954.4 | 2886.3 | 2913.9 | 2982.0 | 3022.5 | 3947.0 | 1370.8 | -13.59 | -50.86 |
| GODREJCP | 1127.3 | 1131.7 | 1115.4 | 1121.3 | 1137.6 | 1148.0 | 1309.0 | 979.5 | -0.81 | -4.89 |
| GODREJPROP | 2123.8 | 2129.9 | 2090.1 | 2106.9 | 2146.7 | 2169.7 | 3015.9 | 1900.0 | -7.33 | -21.13 |
| GRASIM | 2748.6 | 2752.6 | 2733.3 | 2741.0 | 2760.3 | 2771.9 | 2977.8 | 2277.0 | -3.69 | 9.59 |
| HAL | 4716.6 | 4734.1 | 4668.3 | 4692.5 | 4758.3 | 4799.9 | 5165.0 | 3046.1 | -2.95 | 16.25 |
| HAVELLS | 1448.5 | 1446.9 | 1432.4 | 1440.4 | 1454.9 | 1461.4 | 1782.7 | 1381.3 | -2.48 | -11.28 |
| HCLTECH | 1645.4 | 1652.1 | 1626.3 | 1635.9 | 1661.7 | 1677.9 | 2012.2 | 1302.8 | 10.03 | -9.62 |
| HDFCAMC | 5399.0 | 5399.7 | 5360.7 | 5379.8 | 5418.8 | 5438.7 | 5934.5 | 3563.1 | -5.55 | 28.85 |
| HDFCBANK | 1008.9 | 1004.3 | 985.2 | 997.0 | 1016.2 | 1023.5 | 1020.5 | 812.2 | 0.59 | -42.09 |
| HDFCLIFE | 762.2 | 759.2 | 744.1 | 753.2 | 768.2 | 774.2 | 820.8 | 584.3 | 2.69 | 12.02 |
| HEROMOTOCO | 5999.5 | 5987.7 | 5867.2 | 5933.3 | 6053.8 | 6108.2 | 6042.0 | 3344.0 | 6.36 | 25.62 |
| HINDALCO | 799.8 | 797.3 | 783.9 | 791.9 | 805.2 | 810.6 | 864.0 | 546.5 | 1.71 | 24.97 |
| HINDPETRO | 477.9 | 477.9 | 471.0 | 474.5 | 481.4 | 484.8 | 494.5 | 287.6 | 5.51 | 31.96 |
| HINDUNILVR | 2428.4 | 2437.5 | 2403.5 | 2415.9 | 2449.9 | 2471.5 | 2750.0 | 2136.0 | -6.40 | 0.75 |
| HINDZINC | 472.2 | 474.5 | 465.3 | 468.7 | 478.0 | 483.8 | 546.8 | 378.2 | -2.93 | -4.06 |
| HUDCO | 237.1 | 237.7 | 232.0 | 234.6 | 240.2 | 243.3 | 262.7 | 158.9 | 3.62 | 14.71 |
| HYUNDAI | 2337.3 | 2376.9 | 2243.4 | 2290.4 | 2423.9 | 2510.4 | 2890.0 | 1541.7 | 0.61 | 27.74 |
| ICICIBANK | 1383.0 | 1382.2 | 1369.3 | 1376.2 | 1389.1 | 1395.1 | 1500.0 | 1186.0 | -0.53 | 10.72 |
| ICICIGI | 2037.6 | 2042.5 | 2013.5 | 2025.5 | 2054.5 | 2071.5 | 2068.7 | 1613.7 | 1.32 | 10.68 |
| IDEA | 10.2 | 10.4 | 9.7 | 9.9 | 10.6 | 11.1 | 11.1 | 6.1 | 13.76 | 43.24 |
| IDFCFIRSTB | 78.9 | 79.3 | 77.9 | 78.4 | 79.8 | 80.6 | 82.7 | 52.5 | 2.60 | 22.14 |
| IGL | 204.1 | 204.8 | 201.5 | 202.8 | 206.0 | 208.0 | 229.0 | 153.1 | -1.51 | -36.32 |
| INDHOTEL | 733.4 | 731.2 | 709.3 | 721.3 | 743.2 | 753.1 | 894.9 | 672.6 | -1.30 | -2.74 |
| INDIANB | 882.4 | 885.4 | 871.5 | 876.9 | 890.8 | 899.3 | 894.9 | 473.9 | 8.42 | 68.69 |
| INDIGO | 5785.5 | 5790.5 | 5704.5 | 5745.0 | 5831.0 | 5876.5 | 6232.5 | 3945.0 | -2.50 | 43.00 |
| INDUSINDBK | 829.4 | 833.6 | 817.1 | 823.3 | 839.8 | 850.1 | 1086.6 | 606.0 | 9.17 | -17.08 |
| INDUSTOWER | 400.5 | 402.0 | 394.9 | 397.7 | 404.8 | 409.1 | 430.0 | 312.6 | 13.01 | 22.05 |
| INFY | 1536.5 | 1541.8 | 1520.8 | 1528.7 | 1549.7 | 1562.8 | 2006.5 | 1307.0 | 5.17 | -15.80 |
| IOC | 168.7 | 169.2 | 166.6 | 167.7 | 170.2 | 171.7 | 174.5 | 110.7 | 9.65 | 26.73 |
| IRB | 44.0 | 43.9 | 43.3 | 43.6 | 44.3 | 44.6 | 62.0 | 40.5 | 2.09 | -7.28 |
| IRCTC | 703.0 | 705.3 | 696.8 | 699.9 | 708.4 | 713.9 | 859.7 | 656.0 | -2.50 | -12.14 |
| IREDA | 146.6 | 147.1 | 145.4 | 146.0 | 147.7 | 148.8 | 234.3 | 137.0 | -4.31 | -22.88 |
| IRFC | 120.1 | 120.6 | 119.0 | 119.5 | 121.1 | 122.1 | 166.9 | 108.0 | -3.99 | -17.29 |
| ITC | 405.5 | 405.2 | 401.5 | 403.5 | 407.2 | 409.0 | 491.0 | 390.2 | -1.84 | -13.24 |
| ITCHOTELS | 209.8 | 210.3 | 206.7 | 208.3 | 211.8 | 213.8 | 261.6 | 155.1 | -4.38 | - |

NSE 200 SUPPORT & RESISTANCE

| SYMBOL | CLOSE | PIVOT | SUPT 2 | SUPT 1 | RESI 1 | RESI 2 | 52 W H | 52 W L | 30 D % CHG | 365 D % CHG |
|------------|---------|---------|---------|---------|---------|---------|---------|---------|---------------|----------------|
| JINDALSTEL | 1069.4 | 1069.9 | 1054.1 | 1061.7 | 1077.5 | 1085.7 | 1098.0 | 723.4 | 6.34 | 23.57 |
| JIOFIN | 308.4 | 307.7 | 303.3 | 305.8 | 310.2 | 312.1 | 347.4 | 198.7 | -0.76 | -3.44 |
| JSWENERGY | 504.9 | 508.6 | 494.8 | 499.8 | 513.6 | 522.4 | 718.7 | 418.8 | -3.87 | -28.88 |
| JSWSTEEL | 1170.0 | 1168.6 | 1154.7 | 1162.4 | 1176.3 | 1182.5 | 1223.9 | 880.0 | 2.17 | 23.51 |
| JUBLFOOD | 591.2 | 591.6 | 583.6 | 587.4 | 595.4 | 599.6 | 796.8 | 565.0 | 0.07 | -3.57 |
| KALYANKJIL | 504.1 | 506.1 | 491.6 | 497.8 | 512.3 | 520.6 | 795.4 | 399.4 | 1.86 | -28.12 |
| KEI | 4167.3 | 4149.0 | 4081.8 | 4124.5 | 4191.7 | 4216.2 | 4706.0 | 2424.0 | 0.53 | 8.46 |
| KOTAKBANK | 2098.7 | 2102.2 | 2080.6 | 2089.7 | 2111.3 | 2123.8 | 2301.9 | 1703.8 | -5.20 | 21.47 |
| KPITTECH | 1196.6 | 1205.4 | 1172.8 | 1184.7 | 1217.3 | 1238.0 | 1563.4 | 1020.6 | 4.36 | -8.32 |
| LICHSGFIN | 554.8 | 558.3 | 544.2 | 549.5 | 563.6 | 572.3 | 648.9 | 483.7 | -3.18 | -10.00 |
| LICI | 908.3 | 911.4 | 897.5 | 902.9 | 916.8 | 925.3 | 1007.8 | 715.3 | 1.84 | 1.30 |
| LODHA | 1200.8 | 1199.7 | 1184.2 | 1192.5 | 1208.0 | 1215.2 | 1531.0 | 1035.2 | 1.28 | -4.71 |
| LT | 4037.4 | 4031.0 | 3990.7 | 4014.1 | 4054.4 | 4071.3 | 4062.6 | 2965.3 | 4.25 | 15.16 |
| LTF | 292.3 | 294.2 | 287.8 | 290.1 | 296.5 | 300.6 | 308.3 | 129.2 | 9.25 | 109.22 |
| LTIM | 6027.0 | 6025.7 | 5893.7 | 5960.3 | 6092.3 | 6157.7 | 6768.0 | 3802.0 | 7.69 | 2.40 |
| LUPIN | 2030.8 | 2032.4 | 2013.9 | 2022.4 | 2040.9 | 2050.9 | 2402.9 | 1795.2 | 4.48 | -0.36 |
| M&M | 3716.7 | 3728.9 | 3681.0 | 3698.9 | 3746.8 | 3776.8 | 3781.0 | 2425.0 | 3.27 | 26.03 |
| M&MFIN | 346.6 | 342.3 | 324.8 | 335.7 | 353.2 | 359.8 | 349.0 | 231.0 | 16.76 | -82.82 |
| MANKIND | 2239.5 | 2239.6 | 2206.0 | 2222.8 | 2256.4 | 2273.2 | 3054.8 | 2115.1 | -8.78 | -13.01 |
| MARICO | 736.2 | 740.5 | 721.9 | 729.0 | 747.6 | 759.0 | 765.3 | 577.9 | 1.21 | 24.57 |
| MARUTI | 15801.0 | 15747.3 | 15542.3 | 15671.7 | 15876.7 | 15952.3 | 16660.0 | 10725.0 | -3.79 | 44.18 |
| MAXHEALTH | 1168.9 | 1162.9 | 1138.8 | 1153.9 | 1178.0 | 1187.0 | 1314.3 | 936.3 | -3.36 | 17.15 |
| MAZDOCK | 2829.5 | 2817.8 | 2745.6 | 2787.5 | 2859.7 | 2890.0 | 3775.0 | 1918.1 | -0.29 | -30.57 |
| MFSL | 1692.6 | 1684.9 | 1643.7 | 1668.2 | 1709.4 | 1726.1 | 1729.9 | 950.0 | 10.39 | 42.28 |
| MOTHERSON | 112.0 | 112.3 | 110.3 | 111.1 | 113.1 | 114.3 | 116.4 | 71.5 | 5.89 | -32.27 |
| MOTILALOFS | 952.4 | 959.1 | 934.1 | 943.3 | 968.3 | 984.1 | 1097.1 | 513.0 | -6.66 | 5.09 |
| MPHASIS | 2740.4 | 2734.1 | 2678.1 | 2709.2 | 2765.2 | 2790.1 | 3238.0 | 2044.6 | -0.26 | -1.75 |
| MRF | 151950 | 152652 | 149657 | 150803 | 153798 | 155647 | 163600 | 102124 | -6.03 | 23.59 |
| MUTHOOTFIN | 3697.5 | 3705.5 | 3671.8 | 3684.6 | 3718.3 | 3739.2 | 3767.8 | 1873.9 | 11.30 | 94.97 |
| NATIONALUM | 257.6 | 258.7 | 253.1 | 255.3 | 261.0 | 264.4 | 271.9 | 137.8 | 13.98 | 7.20 |
| NAUKRI | 1365.4 | 1365.4 | 1348.2 | 1356.8 | 1374.0 | 1382.6 | 1825.8 | 1157.0 | 4.11 | -82.09 |
| NESTLEIND | 1279.2 | 1281.0 | 1267.6 | 1273.4 | 1286.8 | 1294.4 | 1311.6 | 1055.0 | -0.48 | -42.23 |
| NHPC | 80.1 | 80.4 | 79.3 | 79.7 | 80.9 | 81.6 | 92.3 | 71.0 | -7.44 | 0.14 |
| NMDC | 74.5 | 74.6 | 73.1 | 73.8 | 75.2 | 76.0 | 82.8 | 59.5 | -1.04 | -66.34 |
| NTPC | 326.6 | 327.6 | 323.8 | 325.2 | 329.0 | 331.4 | 378.5 | 292.8 | -4.49 | -10.94 |
| NTPCGREEN | 97.5 | 98.0 | 96.3 | 96.9 | 98.6 | 99.7 | 155.4 | 84.6 | -2.48 | - |
| NYKAA | 268.7 | 269.0 | 265.6 | 267.2 | 270.6 | 272.4 | 273.2 | 154.9 | 4.37 | 57.79 |
| OBEROIRLTY | 1708.5 | 1710.5 | 1683.6 | 1696.0 | 1722.9 | 1737.4 | 2343.7 | 1452.0 | 0.55 | -11.60 |
| OFSS | 8372.5 | 8410.7 | 8241.2 | 8306.8 | 8476.3 | 8580.2 | 13220.0 | 7038.0 | -2.48 | -25.04 |
| OIL | 436.2 | 436.5 | 432.1 | 434.2 | 438.6 | 440.9 | 529.0 | 325.0 | 7.19 | -10.15 |
| ONGC | 248.1 | 248.9 | 245.4 | 246.7 | 250.2 | 252.4 | 273.5 | 205.0 | -0.28 | 0.02 |
| PAGEIND | 38565.0 | 38745.0 | 38075.0 | 38320.0 | 38990.0 | 39415.0 | 50590.0 | 38500.0 | -7.56 | -13.54 |
| PATANJALI | 584.3 | 583.4 | 576.4 | 580.3 | 587.4 | 590.5 | 670.3 | 523.3 | -1.02 | -68.46 |
| PAYTM | 1283.9 | 1289.4 | 1266.2 | 1275.1 | 1298.3 | 1312.6 | 1353.8 | 651.5 | -1.65 | 57.68 |
| PERSISTENT | 6350.5 | 6361.5 | 6257.5 | 6304.0 | 6408.0 | 6465.5 | 6788.9 | 4149.0 | 8.65 | 11.21 |
| PFC | 372.8 | 373.8 | 369.7 | 371.2 | 375.4 | 378.0 | 523.9 | 357.3 | -6.33 | -20.93 |
| PHOENIXLTD | 1715.7 | 1712.2 | 1687.3 | 1701.5 | 1726.4 | 1737.1 | 1902.0 | 1402.5 | 3.59 | 15.82 |
| PIDILITIND | 1489.0 | 1487.0 | 1469.2 | 1479.1 | 1496.9 | 1504.8 | 1620.0 | 1311.1 | -2.44 | -50.40 |
| PIIND | 3441.1 | 3451.6 | 3397.8 | 3419.5 | 3473.3 | 3505.4 | 4330.0 | 2951.1 | -2.63 | -17.06 |
| PNB | 123.9 | 124.5 | 121.7 | 122.8 | 125.5 | 127.2 | 126.2 | 85.5 | 4.88 | 22.80 |

NSE 200 SUPPORT & RESISTANCE

| SYMBOL | CLOSE | PIVOT | SUPT 2 | SUPT 1 | RESI 1 | RESI 2 | 52 W H | 52 W L | 30 D % CHG | 365 D % CHG |
|------------|---------|---------|---------|---------|---------|---------|---------|---------|---------------|----------------|
| POLICYBZR | 1843.9 | 1843.7 | 1808.5 | 1826.2 | 1861.4 | 1878.9 | 2246.9 | 1311.4 | 12.21 | 7.66 |
| POLYCAB | 7648.5 | 7673.0 | 7563.5 | 7606.0 | 7715.5 | 7782.5 | 7903.0 | 4555.0 | -0.33 | 17.36 |
| POWERGRID | 277.2 | 276.9 | 272.4 | 274.8 | 279.3 | 281.5 | 345.4 | 247.3 | -3.82 | -12.01 |
| POWERINDIA | 22397.0 | 22179.0 | 21419.0 | 21908.0 | 22668.0 | 22939.0 | 22450.0 | 8801.0 | 28.33 | 90.95 |
| PREMIERENE | 997.9 | 999.1 | 983.8 | 990.8 | 1006.1 | 1014.4 | 1388.0 | 774.1 | -5.14 | -8.77 |
| PRESTIGE | 1717.2 | 1715.4 | 1684.6 | 1700.9 | 1731.7 | 1746.2 | 1900.0 | 1048.1 | -0.02 | 8.48 |
| RECLTD | 361.4 | 361.8 | 357.7 | 359.6 | 363.6 | 365.8 | 573.3 | 348.6 | -3.55 | -30.04 |
| RELIANCE | 1549.1 | 1542.2 | 1518.0 | 1533.6 | 1557.8 | 1566.4 | 1551.0 | 1114.9 | 5.61 | 24.76 |
| RVNL | 319.1 | 320.5 | 314.4 | 316.8 | 322.8 | 326.5 | 501.8 | 301.6 | -3.01 | -26.16 |
| SAIL | 138.2 | 138.9 | 136.1 | 137.1 | 139.9 | 141.7 | 145.9 | 99.2 | 6.43 | 23.99 |
| SBICARD | 874.1 | 871.7 | 858.1 | 866.1 | 879.7 | 885.4 | 1027.3 | 663.1 | -6.81 | 27.69 |
| SBILIFE | 2027.1 | 2019.7 | 1987.7 | 2007.4 | 2039.4 | 2051.7 | 2032.0 | 1372.6 | 10.19 | 33.11 |
| SBIN | 981.6 | 982.5 | 975.3 | 978.4 | 985.7 | 989.8 | 986.6 | 680.0 | 8.16 | 22.24 |
| SHREECEM | 26480.0 | 26498.3 | 26273.3 | 26376.7 | 26601.7 | 26723.3 | 32490.0 | 23821.1 | -8.31 | 9.85 |
| SHRIRAMFIN | 826.6 | 823.9 | 811.7 | 819.2 | 831.4 | 836.1 | 838.7 | 493.4 | 19.12 | -70.74 |
| SIEMENS | 3216.3 | 3221.9 | 3183.8 | 3200.1 | 3238.2 | 3260.0 | 8036.0 | 2450.0 | 3.86 | -51.60 |
| SOLARINDS | 13951.0 | 13932.7 | 13659.7 | 13805.3 | 14078.3 | 14205.7 | 17820.0 | 8482.5 | -0.94 | 39.74 |
| SONACOMS | 507.7 | 508.5 | 495.2 | 501.4 | 514.7 | 521.7 | 701.0 | 380.0 | 10.07 | -25.39 |
| SRF | 2851.6 | 2839.6 | 2754.7 | 2803.1 | 2888.0 | 2924.5 | 3325.0 | 2126.9 | -10.32 | 29.65 |
| SUNPHARMA | 1777.4 | 1780.8 | 1761.9 | 1769.7 | 1788.6 | 1799.7 | 1910.0 | 1548.0 | 5.26 | 0.01 |
| SUPREMEIND | 3568.7 | 3577.0 | 3509.2 | 3538.9 | 3606.7 | 3644.8 | 5156.8 | 3095.0 | -14.89 | -23.26 |
| SUZLON | 56.7 | 56.8 | 56.2 | 56.4 | 57.1 | 57.4 | 74.3 | 46.2 | 6.80 | -8.87 |
| SWIGGY | 395.5 | 397.4 | 388.2 | 391.8 | 401.0 | 406.6 | 617.3 | 297.0 | -6.26 | -4.11 |
| TATACOMM | 1917.4 | 1906.7 | 1835.7 | 1876.6 | 1947.6 | 1977.7 | 2004.0 | 1291.0 | 0.65 | 10.40 |
| TATACONSUM | 1173.9 | 1172.1 | 1155.7 | 1164.8 | 1181.2 | 1188.5 | 1202.8 | 882.9 | -0.21 | 27.99 |
| TATAELXSI | 5366.5 | 5367.2 | 5304.2 | 5335.3 | 5398.3 | 5430.2 | 7474.0 | 4700.0 | -0.57 | -18.06 |
| TATAPOWER | 388.1 | 389.0 | 384.0 | 386.1 | 391.1 | 394.0 | 447.7 | 326.4 | -2.93 | -4.90 |
| TATASTEEL | 172.5 | 173.0 | 170.9 | 171.7 | 173.8 | 175.1 | 186.9 | 122.6 | 0.30 | 23.66 |
| TATATECH | 679.8 | 681.3 | 671.7 | 675.8 | 685.4 | 690.9 | 973.9 | 597.0 | -0.15 | -28.33 |
| TCS | 3144.8 | 3149.1 | 3122.7 | 3133.8 | 3160.2 | 3175.5 | 4494.9 | 2866.6 | 4.30 | -22.15 |
| TECHM | 1456.0 | 1450.5 | 1416.5 | 1436.2 | 1470.2 | 1484.5 | 1807.7 | 1209.4 | 0.80 | -14.34 |
| TIINDIA | 3005.0 | 3019.1 | 2951.5 | 2978.2 | 3045.8 | 3086.7 | 3825.0 | 2407.1 | -3.88 | -16.79 |
| TITAN | 3902.4 | 3917.8 | 3856.8 | 3879.6 | 3940.6 | 3978.8 | 3956.0 | 2925.0 | 4.42 | 21.02 |
| TMPV | 359.8 | 361.2 | 356.0 | 357.9 | 363.1 | 366.3 | 820.4 | 359.3 | - | - |
| TORNTPHARM | 3721.4 | 3730.5 | 3684.9 | 3703.2 | 3748.8 | 3776.1 | 3882.2 | 2886.5 | 4.23 | 20.24 |
| TORNTPOWER | 1313.9 | 1310.1 | 1295.2 | 1304.6 | 1319.5 | 1325.0 | 1719.9 | 1188.0 | 0.74 | -16.97 |
| TRENT | 4388.9 | 4386.3 | 4320.6 | 4354.7 | 4420.4 | 4452.0 | 7493.1 | 4262.6 | -8.61 | -31.68 |
| TVSMOTOR | 3486.4 | 3484.0 | 3446.5 | 3466.4 | 3503.9 | 3521.5 | 3720.0 | 2171.4 | -4.53 | 43.52 |
| ULTRACEMCO | 11753.0 | 11729.0 | 11617.0 | 11685.0 | 11797.0 | 11841.0 | 13097.0 | 10047.9 | -4.80 | 9.13 |
| UNIONBANK | 153.2 | 154.2 | 150.3 | 151.7 | 155.6 | 158.1 | 158.7 | 100.8 | 8.39 | 32.04 |
| UNITDSPR | 1416.2 | 1418.6 | 1392.5 | 1404.3 | 1430.4 | 1444.7 | 1700.0 | 1271.1 | 3.71 | -4.79 |
| UPL | 753.5 | 754.9 | 745.6 | 749.5 | 758.9 | 764.3 | 776.0 | 493.0 | 10.68 | 37.80 |
| VBL | 451.5 | 453.0 | 445.9 | 448.7 | 455.8 | 460.0 | 663.6 | 419.6 | -1.06 | -28.37 |
| VEDL | 509.8 | 512.6 | 502.8 | 506.3 | 516.1 | 522.5 | 535.5 | 363.0 | 7.56 | 14.93 |
| VMM | 135.4 | 136.1 | 132.2 | 133.8 | 137.7 | 140.1 | 157.6 | 96.0 | -8.57 | - |
| VOLTAS | 1411.8 | 1407.9 | 1383.9 | 1397.9 | 1421.9 | 1431.9 | 1859.4 | 1135.0 | -2.28 | -16.30 |
| WAAREENER | 3246.8 | 3241.9 | 3162.9 | 3204.9 | 3283.9 | 3320.9 | 3865.0 | 1863.0 | -7.41 | 11.89 |
| WIPRO | 246.3 | 246.6 | 244.5 | 245.4 | 247.5 | 248.7 | 324.6 | 228.0 | 2.08 | -56.18 |
| YESBANK | 22.6 | 22.8 | 22.3 | 22.5 | 22.9 | 23.2 | 24.3 | 16.0 | -0.04 | 15.70 |
| ZYDUSLIFE | 928.0 | 930.5 | 919.4 | 923.7 | 934.8 | 941.6 | 1059.1 | 795.0 | -7.42 | -2.07 |

Disclosure & Disclaimer :

HDFC Securities Limited (HSL) is a SEBI Registered Research Analyst having registration no. INH000002475.

This report has been prepared by HDFC Securities Ltd and is solely for information of the recipient only. The report must not be used as a singular basis of any investment decision. The views herein are of a general nature and do not consider the risk appetite or the particular circumstances of an individual investor; readers are requested to take professional advice before investing. "This report may have been refined using AI tools to enhance clarity and readability."

Nothing in this document should be construed as investment advice. Each recipient of this document should make such investigations as they deem necessary to arrive at an independent evaluation of an investment in securities of the companies referred to in this document (including merits and risks) and should consult their own advisors to determine merits and risks of such investment. The information and opinions contained herein have been compiled or arrived at, based upon information obtained in good faith from sources believed to be reliable. Such information has not been independently verified and no guaranty, representation of warranty, express or implied, is made as to its accuracy, completeness or correctness. All such information and opinions are subject to change without notice. Descriptions of any company or companies or their securities mentioned herein are not intended to be complete. HSL is not obliged to update this report for such changes. HSL has the right to make changes and modifications at any time.

This report is not directed to, or intended for display, downloading, printing, reproducing or for distribution to or use by, any person or entity who is a citizen or resident or located in any locality, state, country or other jurisdiction where such distribution, publication, reproduction, availability or use would be contrary to law or regulation or what would subject HSL or its affiliates to any registration or licensing requirement within such jurisdiction.

If this report is inadvertently sent or has reached any person in such country, especially, United States of America, the same should be ignored and brought to the attention of the sender. This document may not be reproduced, distributed or published in whole or in part, directly or indirectly, for any purposes or in any manner.

Foreign currencies denominated securities, wherever mentioned, are subject to exchange rate fluctuations, which could have an adverse effect on their value or price, or the income derived from them. In addition, investors in securities such as ADRs, the values of which are influenced by foreign currencies effectively assume currency risk. It should not be considered to be taken as an offer to

sell or a solicitation to buy any security.

This document is not, and should not, be construed as an offer or solicitation of an offer, to buy or sell any securities or other financial instruments. This report should not be construed as an invitation or solicitation to do business with HSL. HSL may from time to time solicit from, or perform broking, or other services for, any company mentioned in this mail and/or its attachments.

HSL and its affiliated company(ies), their directors and employees may; (a) from time to time, have a long or short position in, and buy or sell the securities of the company(ies) mentioned herein or (b) be engaged in any other transaction involving such securities and earn brokerage or other compensation or act as a market maker in the financial instruments of the company(ies) discussed herein or act as an advisor or lender/borrower to such company(ies) or may have any other potential conflict of interests with respect to any recommendation and other related information and opinions.

HSL, its directors, analysts or employees do not take any responsibility, financial or otherwise, of the losses or the damages sustained due to the investments made or any action taken on basis of this report, including but not restricted to, fluctuation in the prices of shares and bonds, changes in the currency rates, diminution in the NAVs, reduction in the dividend or income, etc.

HSL and other group companies, its directors, associates, employees may have various positions in any of the stocks, securities and financial instruments dealt in the report, or may make sell or purchase or other deals in these securities from time to time or may deal in other securities of the companies / organizations described in this report. As regards the associates of HSL please refer the website.

HSL or its associates might have managed or co-managed public offering of securities for the subject company or might have been mandated by the subject company for any other assignment in the past twelve months.

Please note that HDFC Securities has a proprietary trading desk. This desk maintains an arm's length distance with the Research team and all its activities are segregated from Research activities. The proprietary desk operates independently, potentially leading to investment decisions that may deviate from research views.

HSL or its associates might have received any compensation from the companies mentioned in the report during the period preceding twelve months from the date of this report for services in respect of managing or co-managing public offerings, corporate finance, investment banking or merchant banking, brokerage services or other advisory service in a merger or specific transaction in the normal course of business.

HSL or its analysts did not receive any compensation or other benefits from the companies mentioned in the report or third party in connection with preparation of the research report. Accordingly, neither HSL nor Research Analysts have any material conflict of interest at the time of publication of this report. Compensation of our Research Analysts is not based on any specific merchant banking, investment banking or brokerage service transactions. HSL may have issued other reports that are inconsistent with and reach different conclusion from the information presented in this report.

Research entity has not been engaged in market making activity for the subject company. Research analyst has not served as an officer, director or employee of the subject company. We have not received any compensation/benefits from the subject company or third party in connection with the Research Report.

HDFC securities Limited, I Think Techno Campus, Building - B, "Alpha", Office Floor 8, Near Kanjurmarg Station, Opp. Crompton Greaves, Kanjurmarg (East), Mumbai 400 042 Phone: (022) 3075 3400 Fax: (022) 2496 5066

Compliance Officer: Murli V Karkera Email: complianceofficer@hdfcsec.com Phone: (022) 3045 3600

For grievance redressal contact Customer Care Team Email: customercare@hdfcsec.com Phone: (022) 3901 9400

HDFC Securities Limited, SEBI Reg. No.: NSE, BSE, MSEI, MCX: INZ000186937; AMFI Reg. No. ARN: 13549; PFRDA Reg. No. POP: 11092018; IRDA Corporate Agent License No.: CA0062; SEBI Research Analyst Reg. No.: INH000002475; SEBI Investment Adviser Reg. No.: INA000011538; CIN - U67120MH2000PLC152193

Investment in securities market are subject to market risks. Read all the related documents carefully before investing.

Mutual Funds Investments are subject to market risk. Please read the offer and scheme related documents carefully before investing.

Registration granted by SEBI, membership of BASL (in case of IAs) and certification from NISM in no way guarantee performance of the intermediary or provide any assurance of returns to investors.